

B R O M P T O N



16 West Halkin Street  
Belgravia SW1



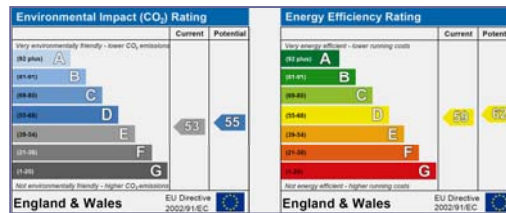
## 16 West Halkin Street Belgravia SW1X 8JL

An extensive maisonette in this prime location off Belgrave Square, offering well-balanced family accommodation over the ground and lower ground floors. The excellent oak-floored reception space comprises a wide entrance hall with double doors through to a spacious drawing room and an elegant dining room with a feature skylight. The master bedroom has a dressing room and en suite bathroom with separate shower enclosure and French windows opening onto a charming patio. There are 3 further en suite bedrooms, one with utility room and separate entrance.

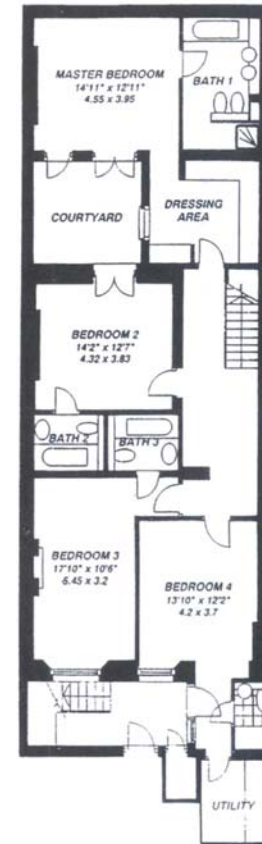
The apartment is in a well-maintained white stucco house with smart entrance hall, just a few steps from Waitrose. Access is available to the gardens of Belgrave Square.

### Accommodation

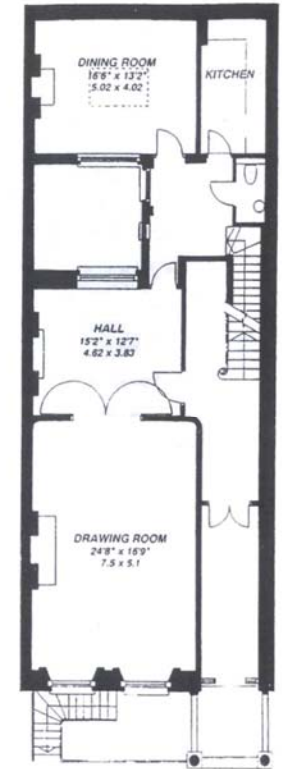
Entrance Hall • Drawing room • Dining room • Kitchen • Master bedroom with en suite dressing room and bathroom • 3 further bedrooms with en suite bathrooms • Utility room • Guest cloakroom • Patio • Air conditioning • Access to Belgrave Square gardens and tennis court.



Gross internal area 2583 sq ft (239 sq m)



GROUND FLOOR



LOWER GROUND FLOOR

£2,250 per week  
Furnished

BROMPTON

020 7584 0220

Fixed 020 7584 0161 net

Brompton Ltd  
www.brompton.net  
36 Kings Road, Sloane Square, London SW3 4UD

Please note that property information including text, photographs and plans are only for the guidance of prospective purchasers and tenants and must not be relied upon as statements of fact. No property information constitutes part of an offer or contract. The descriptions provided herein represent the opinion of the author and whilst given in good faith should not be construed as statements of fact. Nothing in this information shall be deemed a statement that a property is in good condition or otherwise nor that any services or facilities are in good working order. All measurements are approximate.