

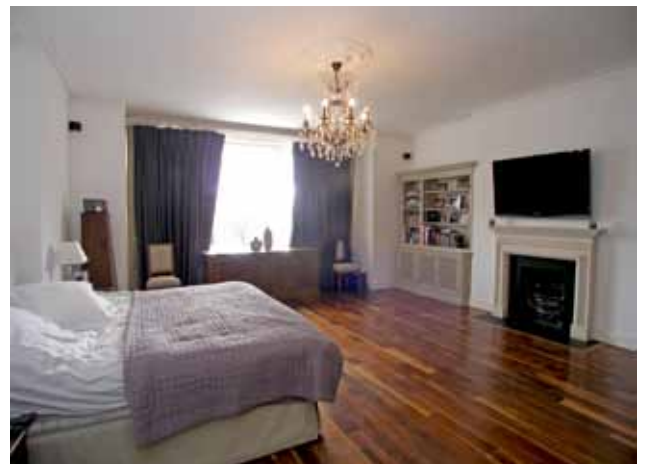


7 CHEYNE PLACE  
CHELSEA SW3



## 7 Cheyne Place, Chelsea SW3

This stunning property has recently been modernised to the highest standard. The reception space is arranged over the raised ground and first floors, including a double first floor reception and a kitchen / breakfast room and dining room on the ground floor. To the rear is a conservatory leading to a 50ft garden. There is a study on the top floor, with a roof terrace above. The lower ground floor comprises a self-contained flat, and in the basement is an extensive pool room with sauna. The property enjoys views over the Chelsea Physic Garden towards the river.





Internal area 6671 sq ft / 620 sq m

#### Accommodation

Entrance Hall • Four reception rooms • Study • Kitchen / Dining Room • Conservatory • 6 bedrooms • 4 bathrooms • 2 Shower rooms • 2 Cloakrooms • Pool room • Staff kitchen • Lift • Garden • Roof terrace.

£15,000pw furnished / unfurnished

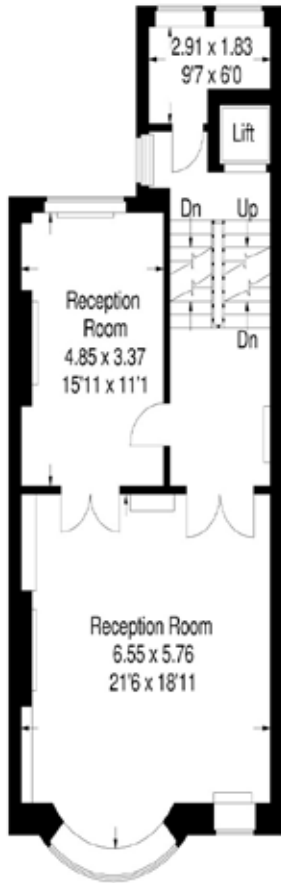
Please note that property information including text, photographs and plans are only for the guidance of prospective purchasers and tenants and must not be relied upon as statements of fact. No property information constitutes part of an offer or contract. The descriptions provided herein represent the opinion of the author and whilst given in good faith should not be construed as statements of fact. Nothing in this information shall be deemed a statement that a property is in good condition or otherwise nor that any services or facilities are in good working order. All measurements are approximate.

B R O M P T O N

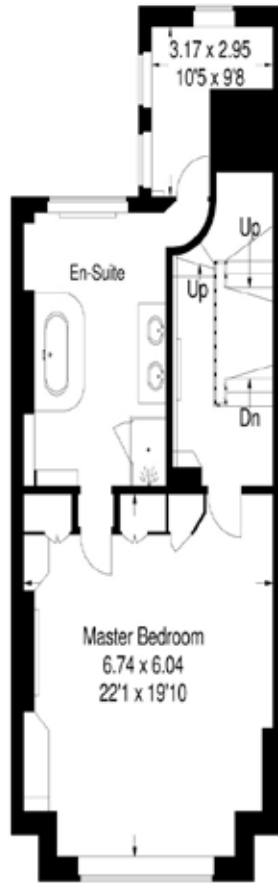
020 7584 0220

Fax 020 7589 1616 [lettings@brompton.net](mailto:lettings@brompton.net)

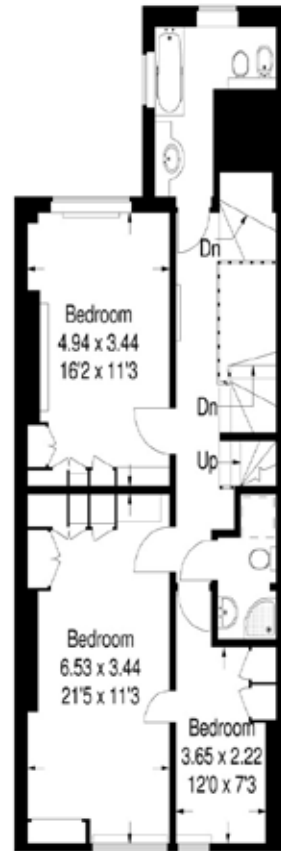
Brompton Ltd  
[www.brompton.net](http://www.brompton.net)  
36 Kings Road, Sloane Square, London SW3 4UD



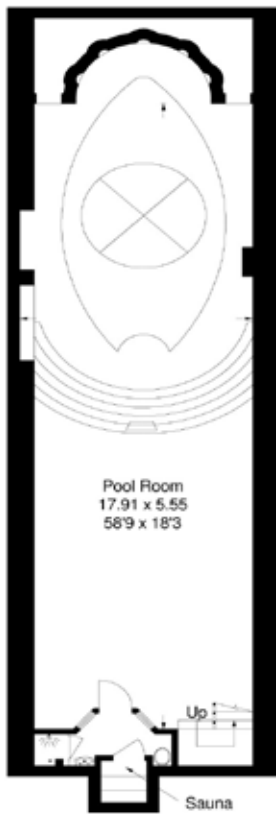
First floor



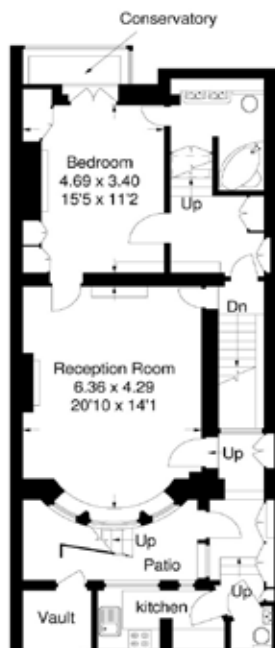
Second floor



Third floor



Basement



Lower ground



Ground floor